



THE BIGGEST REAL ESTATE STORY OF PUNE EAST



TOWNSHIP CODENAME
PEGASUS

Premium 1, 2 & 3 BHK Smart Homes

10 mins. from EON IT Park, New Kharadi

HOMES #BeyondImagination

TOWNSHIP CODENAME
PEGASUS



A modern high-rise apartment building with a mix of blue and orange facade panels. The building has many balconies and windows, some of which are lit up. In the foreground, there is a colorful playground with slides, a climbing structure, and a swing set. The ground is covered with a patterned surface in shades of green, yellow, and orange. There are some trees and bushes around the playground. The sky is a mix of blue and orange, suggesting dusk or dawn. A white box with a blue border is in the top right corner, containing the text "#SHININGBRIGHT VTP CYGNUS".

**#SHININGBRIGHT
VTP CYGNUS**

VTP CYGNUS - MASTER PLAN



LEGEND

1. Entrance Gate
- Podium Level Amenities**
2. Putt Putt Golf
3. Toddlers Play Area
4. Table Tennis
5. Outdoor Chess
6. Hopscotch
7. Half Basket Ball Court
8. Cricket Practice Net
9. Tennis/Multipurpose Court
10. Viewing/Selfie Deck
- Ground Level Amenities**
11. Semi Olympic Sized Pool
12. Kids Pool
13. Outdoor Gym
14. Children's Play Area
15. Bali Theme Clubhouse
16. Party Lawn
17. Indoor Games Room
18. Barbeque Area
19. Miyawaki Forest
20. Meditation Zone
21. Senior Citizen Area
22. Reflexology Path
23. Jogging Track

SPECIFICATIONS

Flooring

- Living, Dining, Kitchen - Glazed Vitrified tiles (1200x600mm)
- All Bedrooms - Glazed Vitrified tiles (1200x600mm)
- Dry Balcony & Terraces- Anti-skid ceramic tiles

Kitchen

- Granite kitchen platform
- S.S. Sink
- Ceramic/glazed tiles above kitchen platform 2ft.
- Provision for water purifier

Toilets

- CP fittings - Jaguar / Cera equivalent
- Flooring - Anti-skid tiles
- Designer Decorative dado tiles up-to 7 feet
- Solar connection in master toilet
- Geysers point in other toilet

Doors & Windows

- Main door - Decorative entrance door with Veneer
- Internal doors - Laminated flush door
- Laminated flush doors in Wash Rooms
- Toilet door frames in granite
- Powder coated aluminum sliding windows with mosquito net
- 2ft. glass railing to terrace with 2ft. brick wall
- MS grill

Electrical fittings

- Switches - Automation switches with seamless glass switch plate
- Concealed copper wiring with M.C.B.
- Adequate electric points with TV & Telephone points in living room, Master bedroom
- AC points in all bedrooms
- 100% DG Back-up for lifts & common area
- Provision for inverter

Plumbing

- Concealed anti-corrosive plumbing

Wall Finishes

- Plastic emulsion paint for internal wall
- Exterior - Superior quality texture/Apex/protective paint

Automation

- Intercom facility
- Video door phone
- Automation with Alexa compatibility

Structure

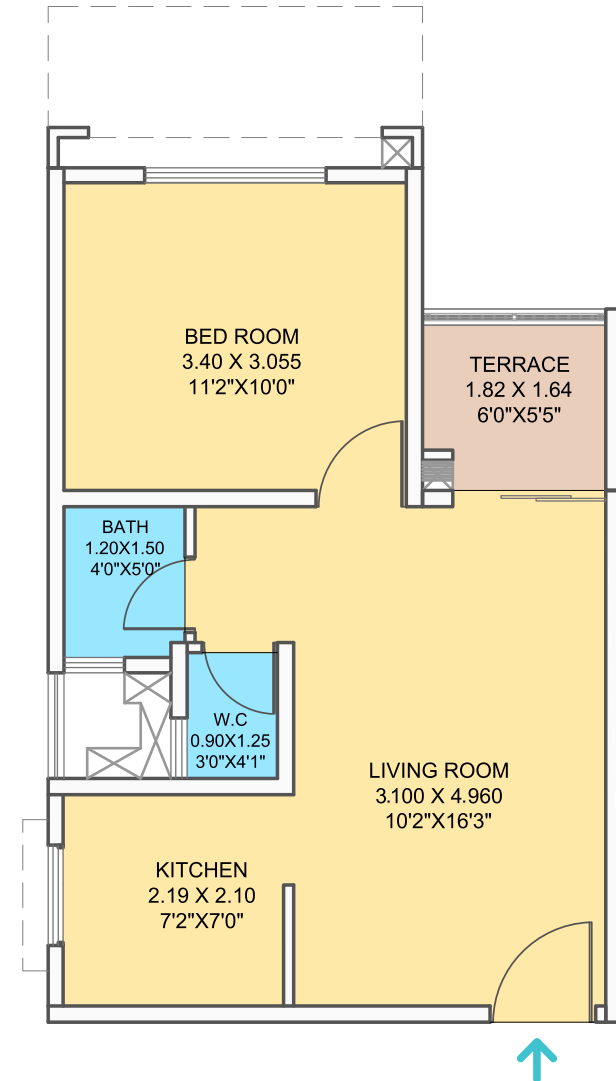
- Earthquake resistant RCC structure

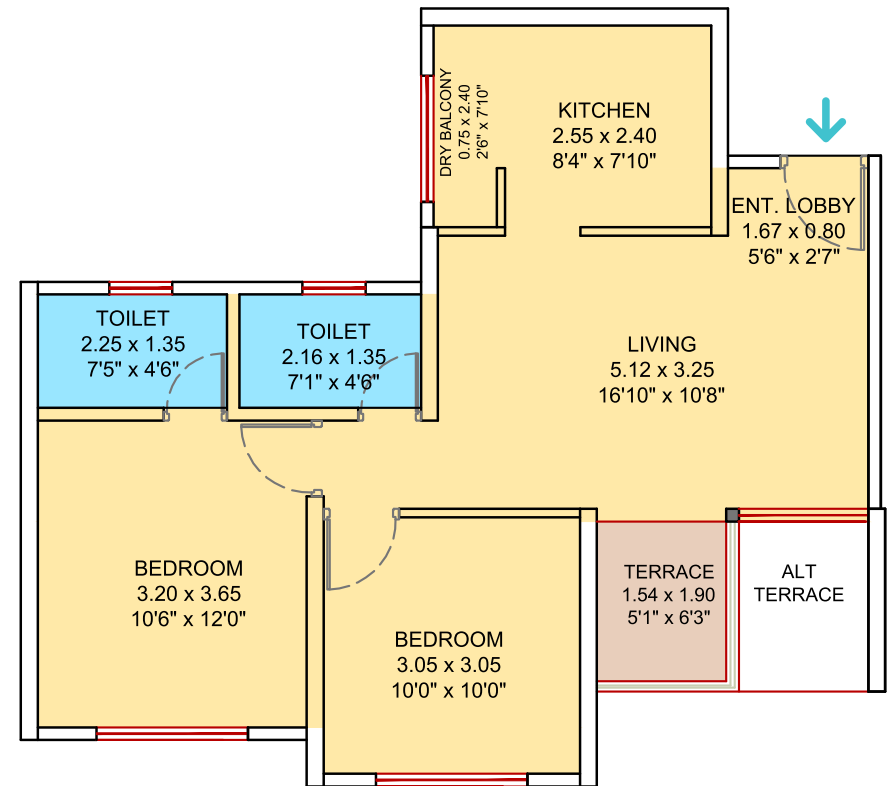




VTP CYGNUS
 Typical 1BHK Unit Plan

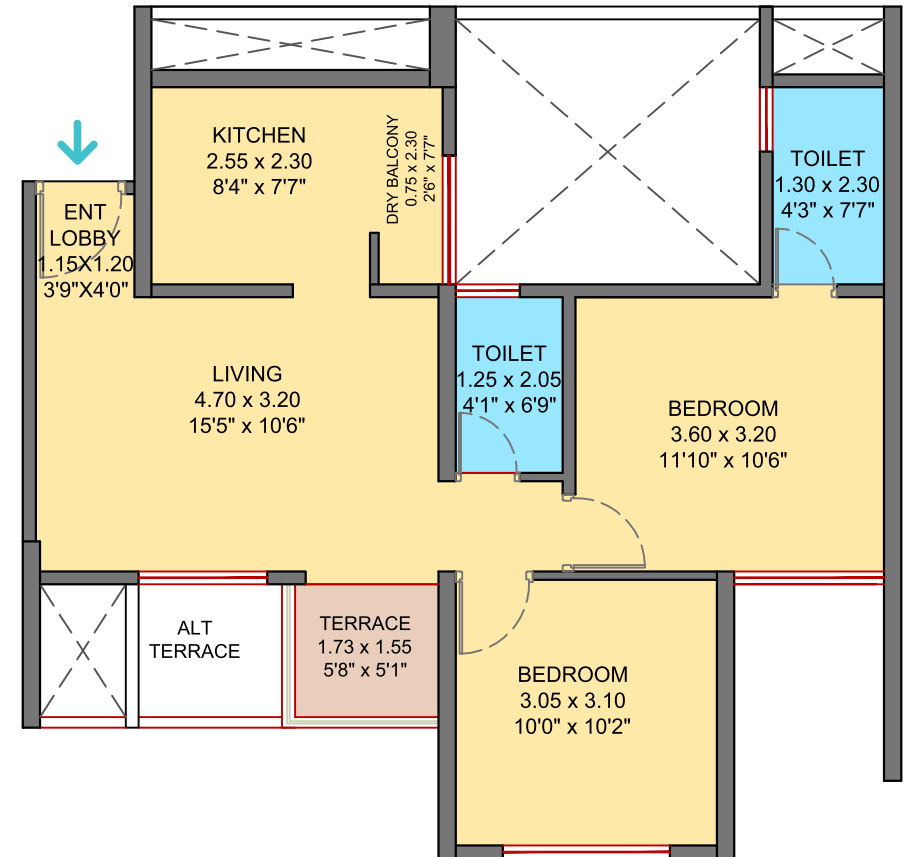
Total Carpet Area
 39.83 sq.m. (429 sq.ft.)





VTP CYGNUS
Typical 2BHK Unit Plan
 Total Carpet Area
 60.38 sq.m. (649 sq.ft.)

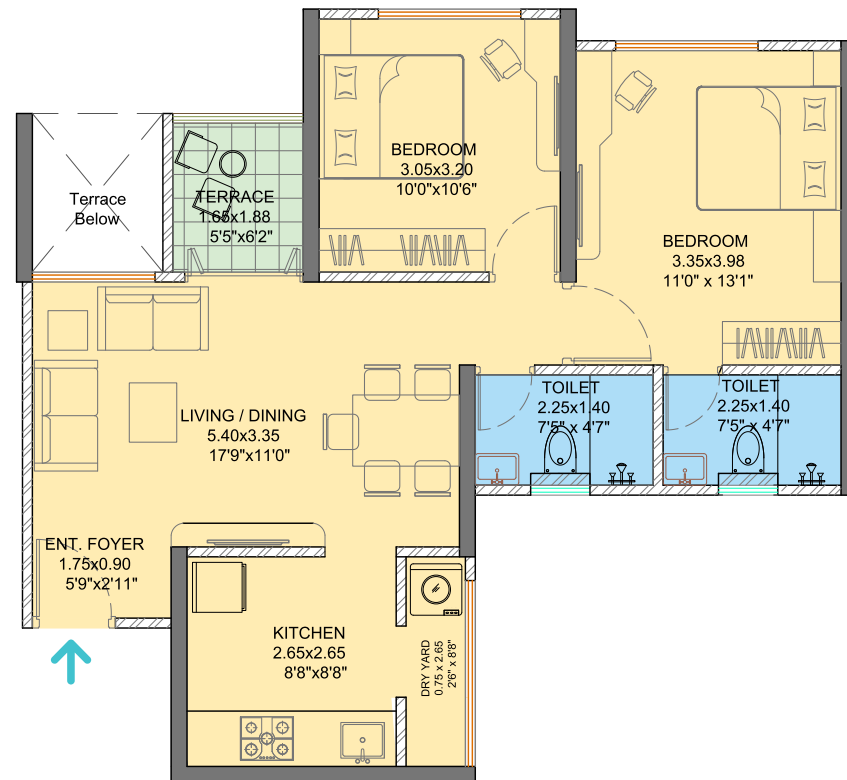
Please note that, the items such as furniture, soft furnishings, wall-coverings, appliances, fittings and decorative finishes etc. in the plan do not form a part of our standard specifications. Optional extras have been displayed here to give an idea to the Purchaser as to how the apartment will look like if such optional extras are fitted.



VTP CYGNUS

Typical 2BHK Unit Plan

Total Carpet Area
57.59 sq.m. (620 sq.ft.)



VTP CYGNUS

Typical 2BHK Unit Plan

Total Carpet Area
65.96 sq.m. (710 sq.ft.)



VTP CYGNUS N

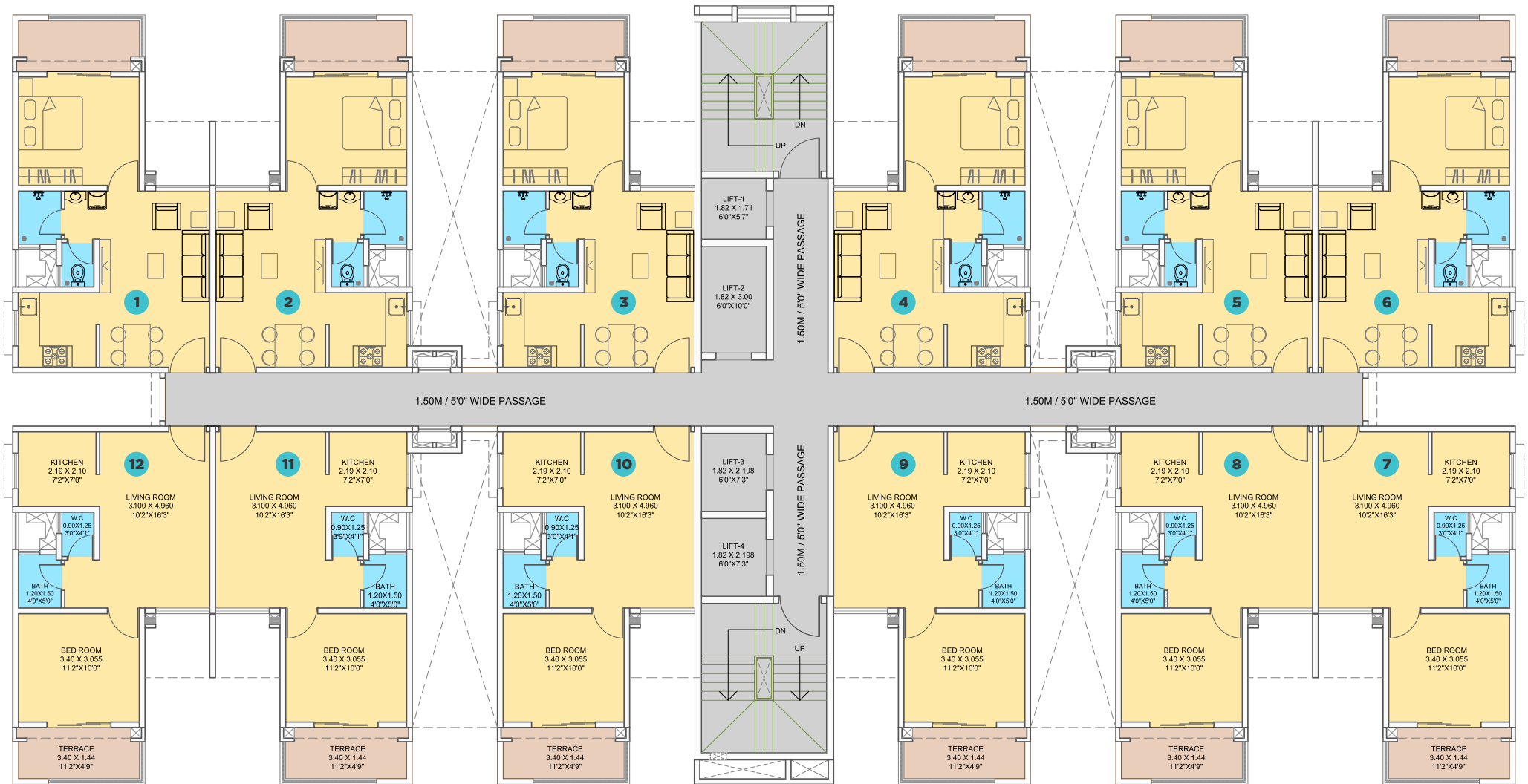
TOWER - 7, 8 & 9

ODD FLOOR PLAN

Floor Nos. - 1, 3, 5, 7, 9, 11, 13, 15, 17, 19, 21

FLAT NO.	TYPE	BASIC CARPET		ENCL. BALCONY		TERRACE		TOTAL CARPET	
		SQ.M.	SQ.FT.	SQ.M.	SQ.FT.	SQ.M.	SQ.FT.	SQ.M.	SQ.FT.
101, 106, 107, 112, 301, 306, 307, 312, 501, 506, 607, 512, 701, 706, 707, 712, 901, 906, 907, 912, 1101, 1106, 1107, 1112, 1301, 1306, 1307, 1312, 1501, 1506, 1507, 1512, 1701, 1706, 1707, 1712, 1901, 1906, 1907, 1912, 2101, 2106, 2107, 2112	1BHK	30.23	325.40	6.62	71.26	2.98	32.08	39.83	428.73
102, 103, 104, 105, 108, 109, 110, 111, 302, 303, 304, 305, 308, 309, 310, 311, 502, 503, 504, 505, 508, 509, 510, 511, 702, 703, 704, 705, 708, 709, 710, 711, 902, 903, 904, 905, 908, 909, 910, 911, 1102, 1103, 1104, 1105, 1108, 1109, 1110, 1111, 1302, 1303, 1304, 1305, 1309, 1310, 1311, 1502, 1503, 1504, 1505, 1508, 1509, 1510, 1511, 1702, 1703, 1704, 1705, 1708, 1709, 1510, 1711, 1902, 1903, 1904, 1905, 1908, 1909, 1910, 1911, 2102, 2103, 2104, 2105, 2108, 2109, 2110, 2111	1BHK	32.17	346.28	4.68	50.38	2.98	32.08	39.83	428.73

The dimensions mentioned in sq.m. are valid and dimensions mentioned in sq. ft. are for information only. Conversion table is; 1 sq.m. = 10.764 sq.ft. & 1 m. = 3.28 ft.



VTP CYGNUS N

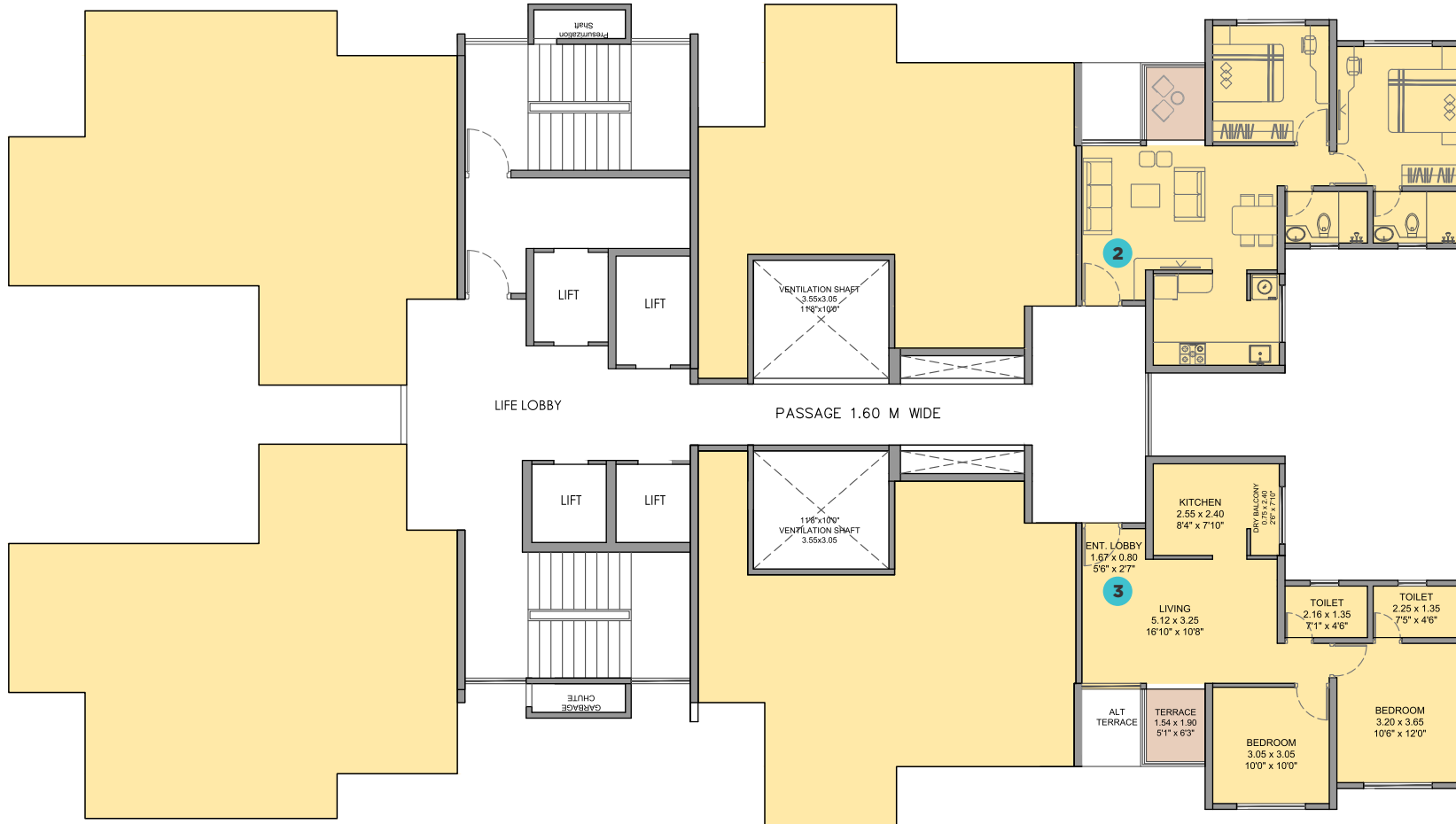
TOWER - 7, 8 & 9

EVEN FLOOR PLAN

Floor Nos. - 2, 4, 6, 8, 10, 12, 14, 16, 18, 20, 22

FLAT NO.	TYPE	BASIC CARPET		ENCL. BALCONY		TERRACE		TOTAL CARPET	
		SQ.M.	SQ.FT.	SQ.M.	SQ.FT.	SQ.M.	SQ.FT.	SQ.M.	SQ.FT.
201, 206, 207, 212, 401, 406, 407, 412, 601, 606, 607, 612, 801, 806, 807, 812, 1001, 1006, 1007, 1012, 1201, 1206, 1207, 1212, 1401, 1406, 1407, 1412, 1601, 1606, 1607, 1612, 1801, 1806, 1807, 1812, 2001, 2006, 2007, 2012, 2201, 2206, 2207, 2212	1BHK	29.81	320.87	6.84	73.63	4.93	53.07	41.58	447.57
202, 203, 204, 205, 208, 209, 210, 211, 402, 403, 404, 405, 408, 409, 410, 411, 602, 603, 604, 605, 608, 609, 610, 611, 802, 803, 804, 805, 809, 810, 811, 1002, 1003, 1004, 1005, 1008, 1009, 1010, 1011, 1202, 1203, 1204, 1205, 1208, 1209, 1210, 1211, 1402, 1403, 1404, 1405, 1408, 1409, 1410, 1411, 1602, 1603, 1604, 1605, 1608, 1609, 1610, 1611, 1802, 1803, 1804, 1805, 1809, 1810, 1811, 2002, 2003, 2004, 2005, 2008, 2009, 2010, 2011, 2202, 2203, 2204, 2205, 2208, 2209, 2210, 2211	1BHK	31.72	341.43	4.93	53.07	4.93	53.07	41.58	447.57

The dimensions mentioned in sq.m. are valid and dimensions mentioned in sq. ft. are for information only. Conversion table is; 1 sq.m. = 10.764 sq.ft. & 1 m. = 3.28 ft.



VTP CYGNUS  N

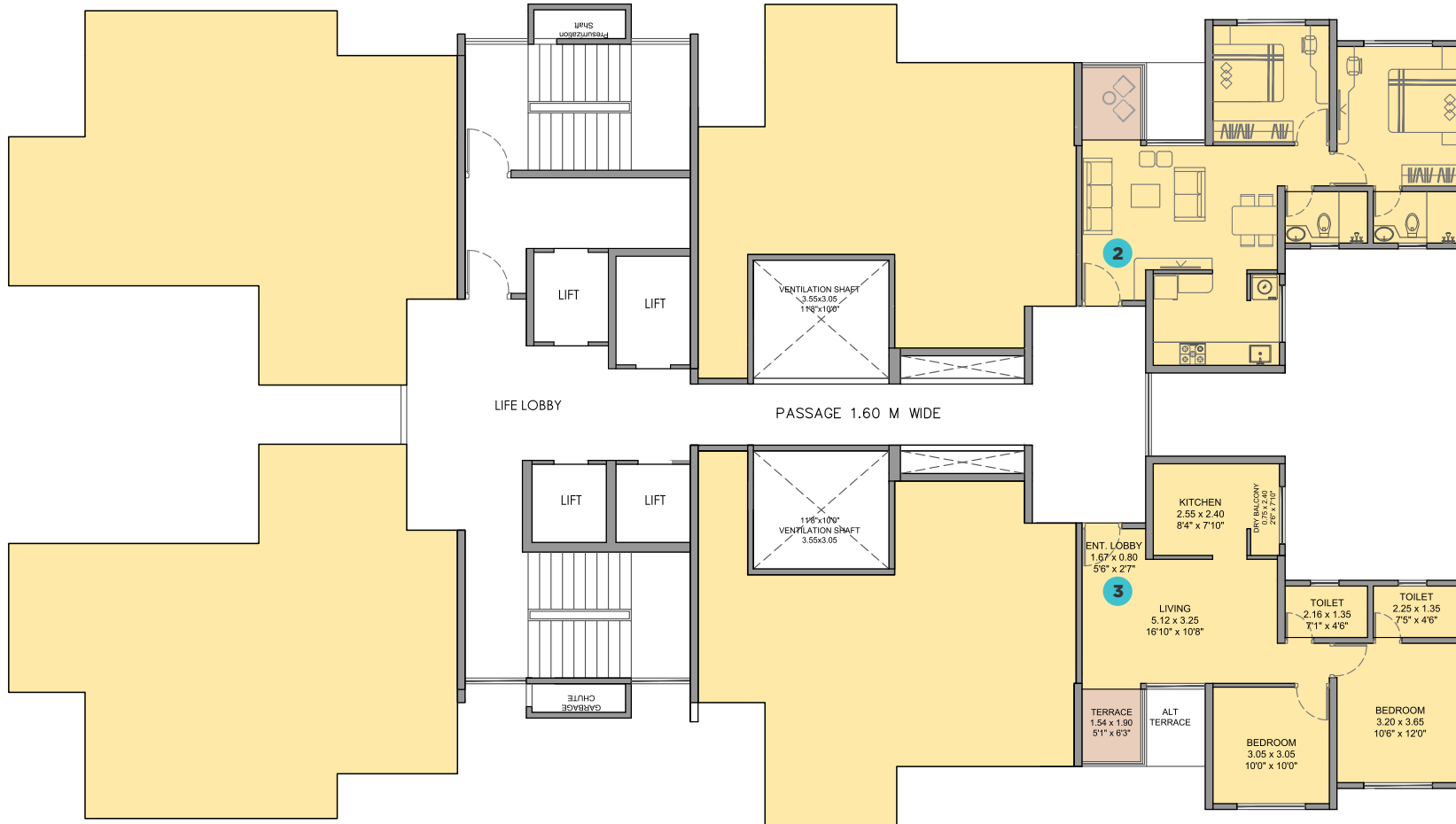
TOWER - 10

ODD FLOOR PLAN

Floor Nos. - 1, 3, 5, 7, 9, 11, 13, 15, 17, 19, 21, 23, 25, 27

FLAT NO.	TYPE	BASIC CARPET		ENCL. BALCONY		TERRACE		TOTAL CARPET	
		SQ.M.	SQ.FT.	SQ.M.	SQ.FT.	SQ.M.	SQ.FT.	SQ.M.	SQ.FT.
102, 103, 302, 303, 502, 503, 702, 703, 902, 903, 1102, 1103, 1302, 1303, 1502, 1503, 1702, 1703, 1902, 1903, 2102, 2103, 2302, 2303, 2502, 2503, 2702, 2703	2BHK	48.76	524.85	8.60	92.57	2.92	31.43	60.28	648.85

The dimensions mentioned in sq.m. are valid and dimensions mentioned in sq. ft. are for information only. Conversion table is; 1 sq.m. = 10.764 sq.ft. & 1 m. = 3.28 ft.



VTP CYGNUS  N

TOWER - 10

EVEN FLOOR PLAN

Floor Nos. - 2, 4, 6, 8, 10, 12, 14, 16, 18, 20, 22, 24, 26

FLAT NO.	TYPE	BASIC CARPET		ENCL. BALCONY		TERRACE		TOTAL CARPET	
		SO.M.	SO.FT.	SO.M.	SO.FT.	SO.M.	SO.FT.	SO.M.	SO.FT.
202, 203, 402, 403, 602, 603, 802, 803, 1002, 1003, 1202, 1203, 1402, 1403, 1602, 1603, 1802, 1803, 2002, 2003, 2202, 2203, 2402, 2403, 2602, 2603	2BHK	48.76	524.85	8.60	92.57	2.92	31.43	60.28	648.85

The dimensions mentioned in sq.m. are valid and dimensions mentioned in sq. ft. are for information only. Conversion table is; 1 sq.m. = 10.764 sq.ft. & 1 m. = 3.28 ft.



VTP CYGNUS

TOWER - 11

ODD FLOOR PLAN

Floor Nos. - 1, 3, 5, 7, 9, 11, 13, 15, 17, 19, 21, 23, 25, 27

FLAT NO.	TYPE	BASIC CARPET		ENCL. BALCONY		TERRACE		TOTAL CARPET	
		SQ.M.	SQ.FT.	SQ.M.	SQ.FT.	SQ.M.	SQ.FT.	SQ.M.	SQ.FT.
101, 104, 105, 108, 301, 304, 305, 308, 501, 504, 505, 508, 701, 704, 705, 708, 901, 904, 905, 908, 1101, 1104, 1105, 1108, 1301, 1304, 1305, 1308, 1501, 1504, 1505, 1508, 1701, 1704, 1705, 1708, 1901, 1904, 1905, 1908, 2101, 2104, 2105, 2108, 2301, 2304, 2305, 2308, 2501, 2504, 2505, 2508, 2701, 2704, 2705, 2708	2BHK	45.59	490.73	11.76	126.58	2.93	31.54	60.38	648.85
102, 103, 106, 107, 302, 303, 306, 307, 502, 503, 506, 507, 702, 703, 706, 707, 902, 903, 906, 907, 1102, 1103, 1106, 1107, 1302, 1303, 1306, 1307, 1502, 1503, 1506, 1507, 1702, 1703, 1706, 1707, 1902, 1903, 1906, 1907, 2102, 2103, 2106, 2107, 2302, 2303, 2306, 2307, 2502, 2503, 2506, 2507, 2702, 2703, 2706, 2707	2BHK	49.41	531.85	5.55	59.74	2.6	27.99	57.56	619.58

The dimensions mentioned in sq.m. are valid and dimensions mentioned in sq. ft. are for information only. Conversion table is; 1 sq.m. = 10.764 sq.ft. & 1 m. = 3.28 ft.



VTP CYGNUS

TOWER - 11

EVEN FLOOR PLAN

Floor Nos. - 2, 4, 6, 8, 10, 12, 14, 16, 18, 20, 22, 24, 26

FLAT NO.	TYPE	BASIC CARPET		ENCL. BALCONY		TERRACE		TOTAL CARPET	
		sq.m.	sq.ft.	sq.m.	sq.ft.	sq.m.	sq.ft.	sq.m.	sq.ft.
201, 204, 205, 208, 401, 404, 405, 408, 601, 604, 605, 608, 801, 804, 805, 808 1001, 1004, 1005, 1008, 1201, 1204, 1205, 1208, 1401, 1404, 1405, 1408 1601, 1604, 1605, 1608, 1801, 1804, 1805, 1808, 2001, 2004, 2005, 2008 2201, 2204, 2205, 2208, 2401, 2404, 2405, 2408, 2601, 2604, 2605, 2608	2BHK	45.59	490.73	11.76	126.58	2.93	31.54	60.38	648.85
202, 203, 206, 207, 402, 403, 406, 407, 602, 603, 606, 607, 802, 803, 806, 807, 1002, 1003, 1006, 1007, 1202, 1203, 1206, 1207, 1402, 1403, 1406, 1407, 1602, 1603, 1606, 1607, 1802, 1803, 1806, 1807, 2002, 2003, 2006, 2007, 2202, 2203, 2206, 2207, 2402, 2403, 2406, 2407, 2602, 2603, 2606, 2607	2BHK	49.41	531.85	5.55	59.74	2.6	27.99	57.56	619.58

The dimensions mentioned in sq.m. are valid and dimensions mentioned in sq. ft. are for information only. Conversion table is; 1 sq.m. = 10.764 sq.ft. & 1 m. = 3.28 ft.



VTP CYGNUS

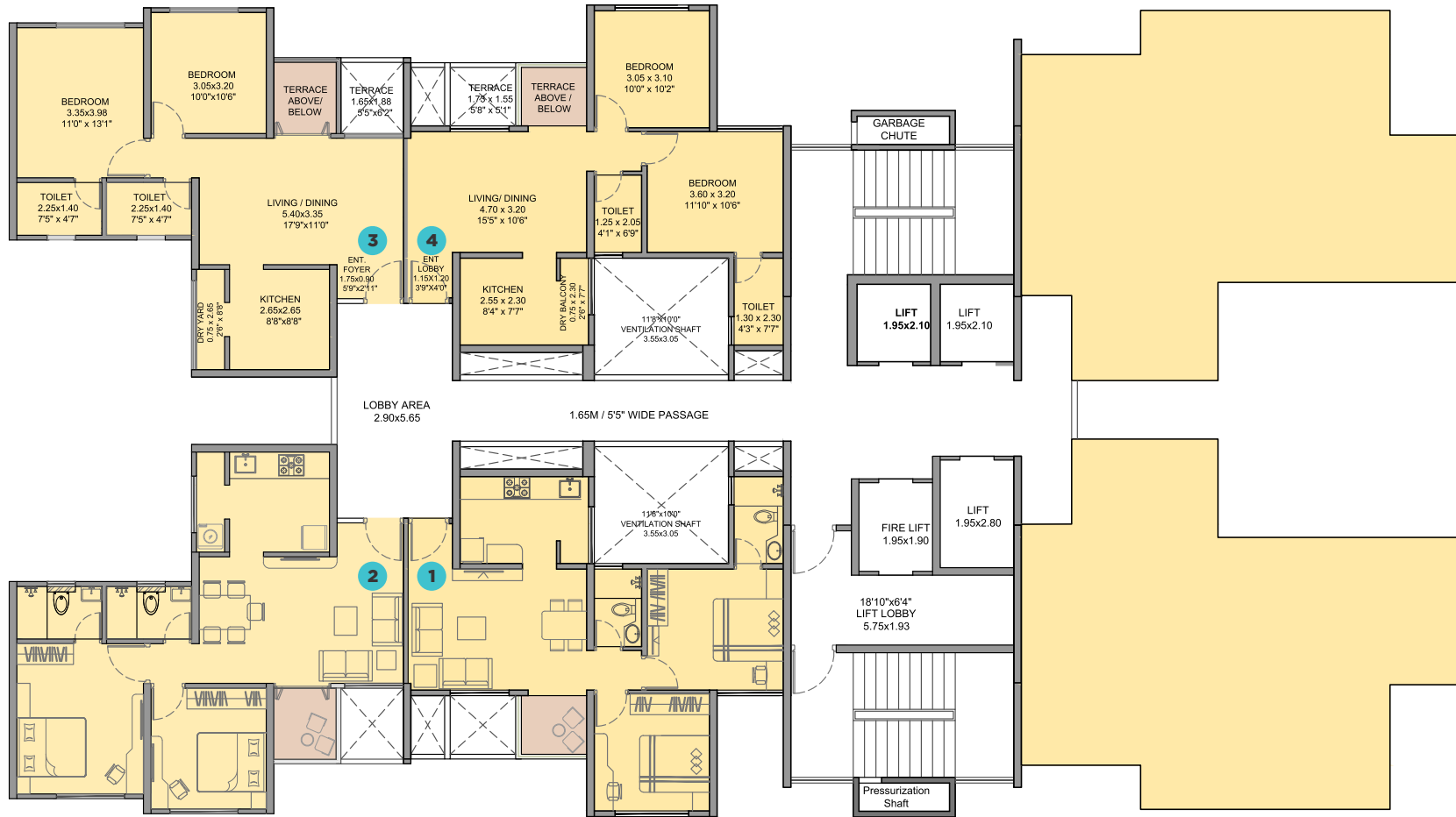
TOWER - 12

ODD FLOOR PLAN

Floor Nos. - 1, 3, 5, 7, 9, 11, 13, 15, 17, 19, 21, 23, 25, 27

FLAT NO.	TYPE	BASIC CARPET		ENCL. BALCONY		TERRACE		TOTAL CARPET	
		SQ.M.	SQ.FT.	SQ.M.	SQ.FT.	SQ.M.	SQ.FT.	SQ.M.	SQ.FT.
102, 103, 302, 303, 502, 503, 702, 703, 902, 903, 1102, 1103, 1302, 1303, 1502, 1503, 1702, 1703, 1902, 1903, 2102, 2103, 2302, 2303, 2502, 2503, 2702, 2703	2BHK	53.24	573.08	9.66	103.98	3.1	33.37	66.00	710.42
101, 104, 301, 304, 501, 504, 701, 704, 901, 904, 1101, 1104, 1301, 1304, 1501, 1504, 1701, 1704, 1901, 1904, 2101, 2104, 2301, 2304, 2501, 2504, 2701, 2704	2BHK	49.41	531.85	5.55	59.74	2.6	27.99	57.56	619.58

The dimensions mentioned in sq.m. are valid and dimensions mentioned in sq. ft. are for information only. Conversion table is; 1 sq.m. = 10.764 sq.ft. & 1 m. = 3.28 ft.



VTP CYGNUS

TOWER - 12

EVEN FLOOR PLAN

Floor Nos. - 2, 4, 6, 8, 10, 12, 14, 16, 18, 20, 22, 24, 26

FLAT NO.	TYPE	BASIC CARPET		ENCL. BALCONY		TERRACE		TOTAL CARPET	
		SQ.M.	SQ.FT.	SQ.M.	SQ.FT.	SQ.M.	SQ.FT.	SQ.M.	SQ.FT.
202, 203, 402, 403, 602, 603, 802, 803, 1002, 1003, 1202, 1203, 1402, 1403, 1602, 1603, 1802, 1803, 2002, 2003, 2202, 2203, 2402, 2403, 2602, 2603	2BHK	53.24	573.08	9.66	103.98	3.1	33.37	66.00	710.42
201, 204, 401, 404, 601, 604, 801, 804, 1001, 1004, 1201, 1204, 1401, 1404, 1601, 1601, 1801, 1804, 2001, 2004, 2201, 2204, 2401, 2404, 2601, 2604	2BHK	49.41	531.85	5.55	59.74	2.6	27.99	57.56	619.58

The dimensions mentioned in sq.m. are valid and dimensions mentioned in sq. ft. are for information only. Conversion table is; 1 sq.m. = 10.764 sq.ft. & 1 m. = 3.28 ft.

**#NEVERCHECKOUT
VTP BEAUMONDE**



VTP BEAUMONDE - MASTER PLAN



LEGEND

1. Entrance Gate
2. Bali Theme Clubhouse with Water Bodies
3. Semi Olympic Sized Pool with Water Spouts and Floating Deck
4. Kids Splash Pool
5. Gymnasium
6. Multipurpose Party Hall with Party Lawn
7. Indoor Games Room
8. Multi-Game Court
9. Outdoor Gym
10. Cricket Practice Net
11. Herbal Plantation
12. Sunken Court
13. Yoga Lawn
14. Amphitheater
15. Reflexology Path
16. Stage
17. Sand Pit Area
18. Children's Play Area
19. Jogging Track
20. Skating Rink with Skate-Boarding Arena
21. Miyawaki Forest
22. Barbeque Area

SPECIFICATIONS

Flooring

- Living, Dining, Kitchen - Glazed Vitrified tiles (1200x600mm)
- All Bedrooms - Glazed Vitrified tiles (1200x600mm)
- Dry Balcony & Terraces- Anti-skid ceramic tiles

Kitchen

- Granite kitchen platform
- S.S. Sink
- Ceramic/glazed tiles above kitchen platform 2ft.
- Provision for water purifier

Toilets

- CP fittings - Jaguar / Cera equivalent
- Flooring - Anti-skid tiles
- Designer Decorative dado tiles up-to 7 feet
- Solar connection in master toilet
- Geysers point in other toilet

Doors & Windows

- Main door - Decorative entrance door with Veneer
- Internal doors - Laminated flush door
- Laminated flush doors in Wash Rooms
- Toilet door frames in granite
- Powder coated aluminum sliding windows with mosquito net
- 2ft. glass railing to terrace with 2ft. brick wall
- MS grill

Electrical fittings

- Switches - Automation switches with seamless glass switch plate
- Concealed copper wiring with M.C.B.
- Adequate electric points with TV & Telephone points in living room, Master bedroom
- AC points in all bedrooms
- 100% DG Back-up for lifts & common area
- Provision for inverter

Plumbing

- Concealed anti-corrosive plumbing

Wall Finishes

- Plastic emulsion paint for internal wall
- Exterior - Superior quality texture/Apex/protective paint

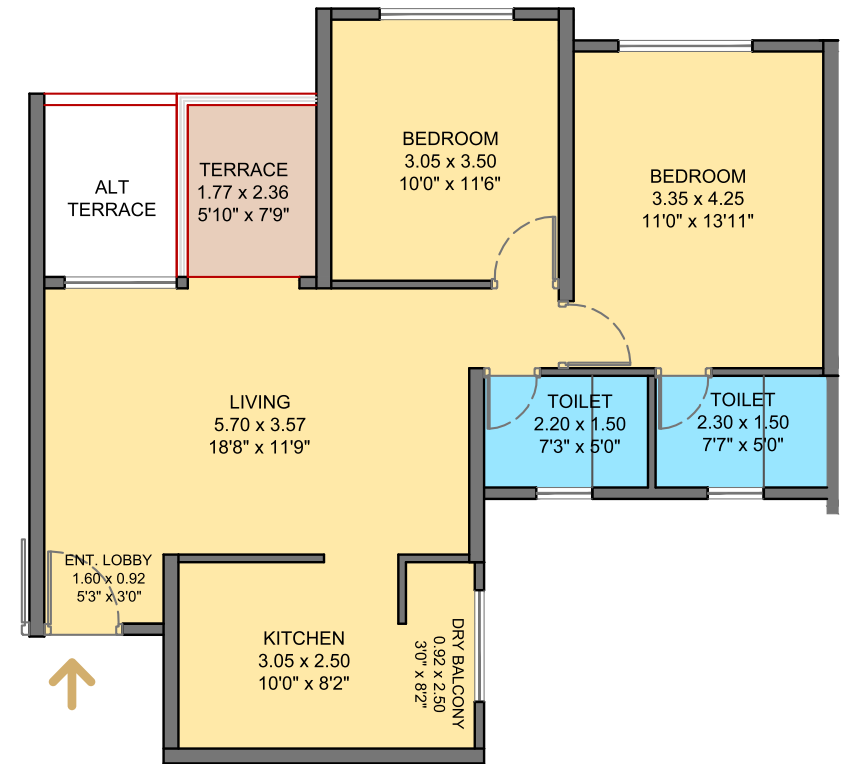
Automation

- Intercom facility
- Video door phone
- Automation with Alexa compatibility

Structure

- Earthquake resistant RCC structure



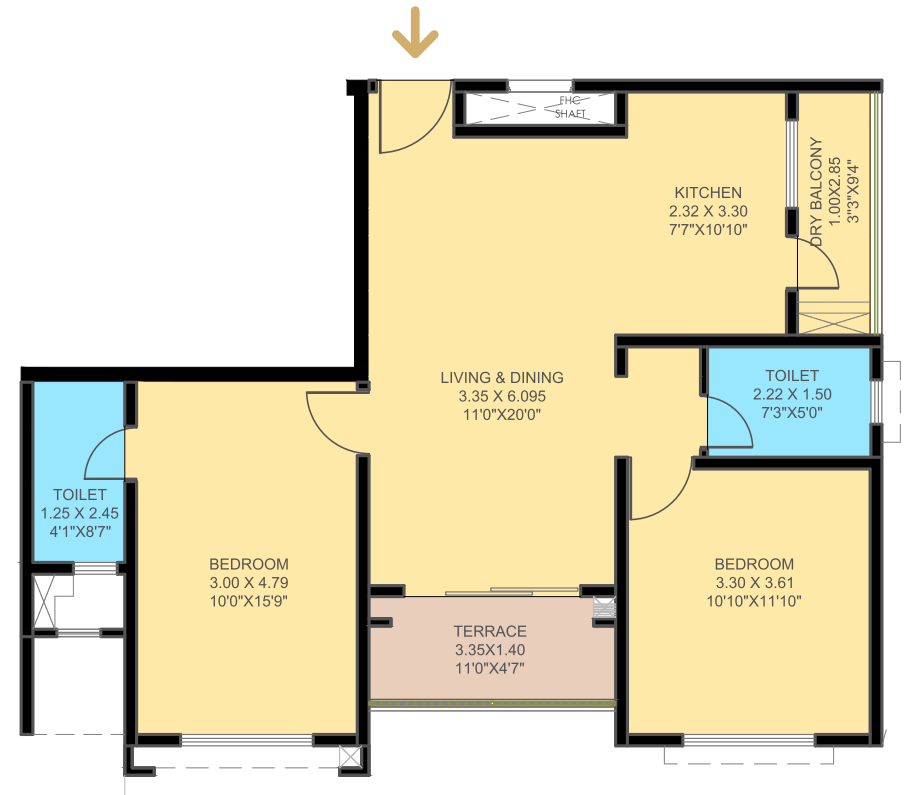


VTP BEAUMONDE

Typical 2BHK Unit Plan

Total Carpet Area

72.10 sq.m. (776 sq.ft.)



VTP BEAUMONDE

Typical 2BHK Unit Plan

Total Carpet Area
74.05 sq.m. (797 sq.ft.)



VTP BEAUMONDE

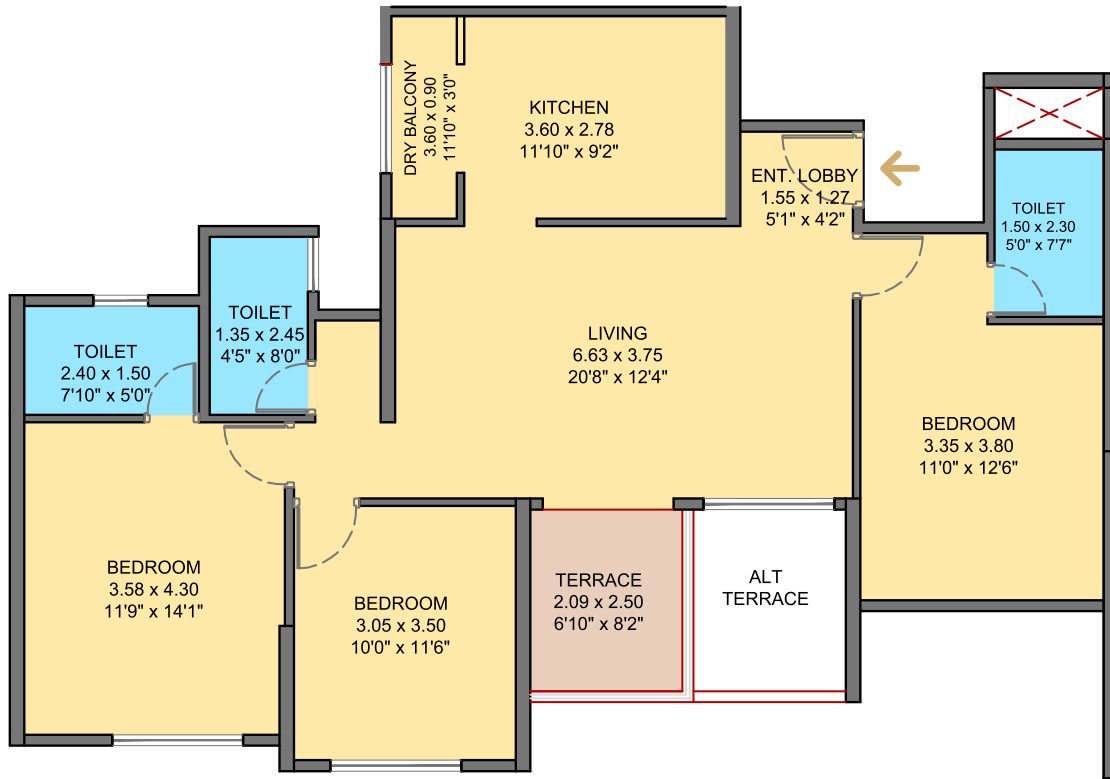
Typical Smart 3BHK Unit Plan

Total Carpet Area
98.01 sq.m. (1055 sq.ft.)

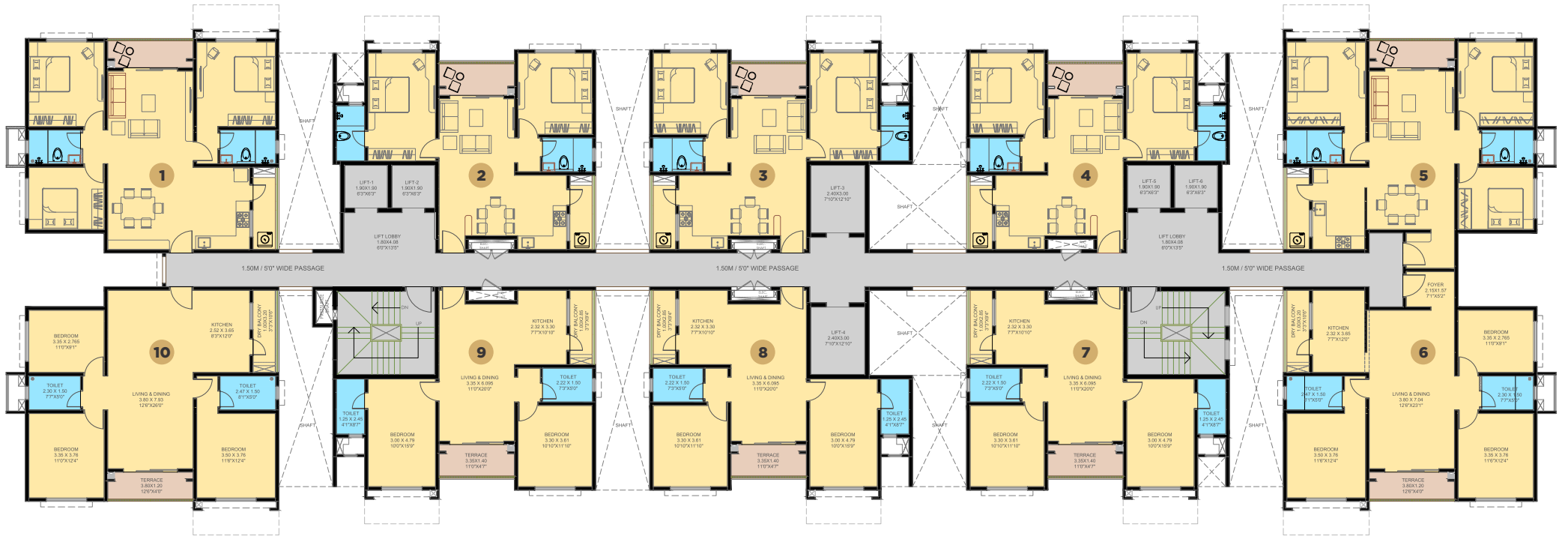
VTP BEAUMONDE

Typical 3BHK Unit Plan

Total Carpet Area
101.52 sq.m. (1093 sq.ft.)



Please note that, the items such as furniture, soft furnishings, wall-coverings, appliances, fittings and decorative finishes etc. in the plan do not form a part of our standard specifications. Optional extras have been displayed here to give an idea to the Purchaser as to how the apartment will look like if such optional extras are fitted.



VTP BEAUMONDE



TOWER - 1

ODD FLOOR PLAN

Floor Nos. - 1, 3, 5, 7, 9, 11, 13, 15, 17, 19, 21

FLAT NO.	TYPE	BASIC CARPET		ENCL. BALCONY		OPEN BALCONY		TERRACE		TOTAL CARPET	
		SQ.M.	SQ.FT.	SQ.M.	SQ.FT.	SQ.M.	SQ.FT.	SQ.M.	SQ.FT.	SQ.M.	SQ.FT.
102, 103, 104, 107, 108, 109, 302, 303, 304, 307, 308, 309, 502, 503, 504, 507, 508, 509, 702, 703, 704, 707, 708, 709, 902, 903, 904, 907, 908, 909, 1102, 1103, 1104, 1107, 1108, 1109, 1302, 1303, 1304, 1307, 1308, 1309, 1502, 1503, 1504, 1507, 1508, 1509, 1702, 1703, 1704, 1707, 1708, 1709, 1902, 1903, 1904, 1907, 1908, 1909, 2102, 2103, 2104, 2107, 2108, 2109	2BHK	61.61	663.17	4.78	51.45	2.97	31.97	4.69	50.48	74.05	797.07
101, 301, 501, 701, 901, 1101, 1301, 1501, 1701, 1901, 2101 110, 310, 510, 710, 910, 1110, 1310, 1510, 1710, 1910, 2110	2.5BHK	78.57	845.73	11.16	120.13	3.31	35.63	4.56	49.08	97.6	1050.57
105, 305, 505, 705, 905, 1105, 1305, 1505, 1705, 1905, 2105 106, 306, 506, 706, 906, 1106, 1306, 1506, 1706, 1906, 2106	2.5BHK	78.73	847.45	11.02	118.62	3.31	35.63	4.56	49.08	97.62	1050.78

The dimensions mentioned in sq.m. are valid and dimensions mentioned in sq. ft. are for information only. Conversion table is; 1 sq.m. = 10.764 sq.ft. & 1 m. = 3.28 ft.



VTP BEAUMONDE



TOWER - 1

EVEN FLOOR PLAN

Floor Nos. - 2, 4, 6, 8, 10, 12, 14, 16, 18, 20, 22

FLAT NO.	TYPE	BASIC CARPET		ENCL. BALCONY		OPEN BALCONY		TERRACE		TOTAL CARPET	
		SQ.M.	SQ.FT.	SQ.M.	SQ.FT.	SQ.M.	SQ.FT.	SQ.M.	SQ.FT.	SQ.M.	SQ.FT.
202, 203, 204, 207, 208, 209, 402, 403, 404, 407, 408, 409, 602, 603, 604, 607, 608, 609, 802, 803, 804, 807, 808, 809, 1002, 1003, 1004, 1007, 1008, 1009, 1202, 1203, 1204, 1207, 1208, 1209, 1402, 1403, 1404, 1407, 1408, 1409, 1602, 1603, 1604, 1607, 1608, 1609, 1802, 1803, 1804, 1807, 1808, 1809, 2002, 2003, 2004, 2007, 2008, 2009, 2202, 2203, 2204, 2207, 2208, 2209	2BHK	61.51	662.09	4.78	51.45	2.97	31.97	4.37	47.04	73.63	792.55
201, 401, 601, 801, 1001, 1201, 1401, 1601, 1801, 2001, 2201 210, 410, 610, 810, 1010, 1210, 1410, 1610, 1810, 2010, 2210	2.5BHK	78.34	843.25	11.29	121.53	3.31	35.63	5.07	54.57	98.01	1054.98
205, 405, 605, 805, 1005, 1205, 1405, 1605, 1805, 2005, 2205 206, 406, 606, 806, 1006, 1206, 1406, 1606, 1806, 2006, 2206	2.5BHK	78.51	845.08	11.15	120.02	3.31	35.63	5.07	54.57	98.04	1055.30

The dimensions mentioned in sq.m. are valid and dimensions mentioned in sq. ft. are for information only. Conversion table is; 1 sq.m. = 10.764 sq.ft. & 1 m. = 3.28 ft.



VTP BEAUMONDE



TOWER - 3

ODD FLOOR PLAN

Floor Nos. - 1, 3, 5, 7, 9, 11, 13, 15, 17, 19, 21, 23, 25, 27

FLAT NO.	TYPE	BASIC CARPET		ENCL. BALCONY		TERRACE		TOTAL CARPET	
		SQ.M.	SQ.FT.	SQ.M.	SQ.FT.	SQ.M.	SQ.FT.	SQ.M.	SQ.FT.
102, 103, 106, 107, 302, 303, 306, 307, 502, 503, 506, 507, 702, 703, 706, 707, 902, 903, 906, 907, 1102, 1103, 1106, 1107, 1302, 1303, 1306, 1307, 1502, 1503, 1506, 1507, 1702, 1703, 1706, 1707, 1902, 1903, 1906, 1907, 2102, 2103, 2106, 2107, 2302, 2303, 2306, 2307, 2502, 2503, 2506, 2507, 2702, 2703, 2706, 2707	3BHK	84.65	911.17	11.63	125.19	5.24	56.40	101.52	1092.76
104, 304, 504, 704, 904, 1104, 1304, 1504, 1704, 1904, 2104, 2304, 2504, 2704 105, 305, 505, 705, 905, 1105, 1305, 1505, 1705, 1905, 2105, 2305, 2505, 2705	2BHK	59.76	643.26	11.22	120.77	3.98	42.84	74.96	806.87
101, 301, 501, 701, 901, 1101, 1301, 1501, 1701, 1901, 2101, 2301, 2501, 2701 108, 308, 508, 708, 908, 1108, 1308, 1508, 1708, 1908, 2108, 2308, 2508, 2708	2BHK	56.90	612.47	11.22	120.77	3.98	42.84	72.10	776.08

The dimensions mentioned in sq.m. are valid and dimensions mentioned in sq. ft. are for information only. Conversion table is; 1 sq.m. = 10.764 sq.ft. & 1 m. = 3.28 ft.



VTP BEAUMONDE



TOWER - 3

EVEN FLOOR PLAN

Floor Nos. - 2, 4, 6, 8, 10, 12, 14, 16, 18, 20, 22, 24, 26

FLAT NO.	TYPE	BASIC CARPET		ENCL. BALCONY		TERRACE		TOTAL CARPET	
		SQ.M.	SQ.FT.	SQ.M.	SQ.FT.	SQ.M.	SQ.FT.	SQ.M.	SQ.FT.
202, 203, 206, 207, 402, 403, 406, 407, 602, 603, 606, 607, 802, 803, 806, 807, 1002, 1003, 1006, 1007, 1202, 1203, 1206, 1207, 1402, 1403, 1406, 1407, 1602, 1603, 1606, 1607, 1802, 1803, 1806, 1807, 2002, 2003, 2006, 2007, 2202, 2203, 2206, 2207, 2402, 2403, 2406, 2407, 2602, 2603, 2606, 2607	3BHK	84.65	911.17	11.63	125.19	5.24	56.40	101.52	1092.76
204, 404, 604, 804, 1004, 1204, 1404, 1604, 1804, 2004, 2204, 2404, 2604 205, 405, 605, 805, 1005, 1205, 1405, 1605, 1805, 2005, 2205, 2405, 2605	2BHK	59.76	643.26	11.22	120.77	3.98	42.84	74.96	806.87
201, 401, 601, 801, 1001, 1201, 1401, 1601, 1801, 2001, 2201, 2401, 2601 208, 408, 608, 808, 1008, 1208, 1408, 1608, 1808, 2008, 2208, 2408, 2608	2BHK	56.90	612.47	11.22	120.77	3.98	42.84	72.10	776.08

The dimensions mentioned in sq.m. are valid and dimensions mentioned in sq. ft. are for information only. Conversion table is; 1 sq.m. = 10.764 sq.ft. & 1 m. = 3.28 ft.



VTP BEAUMONDE



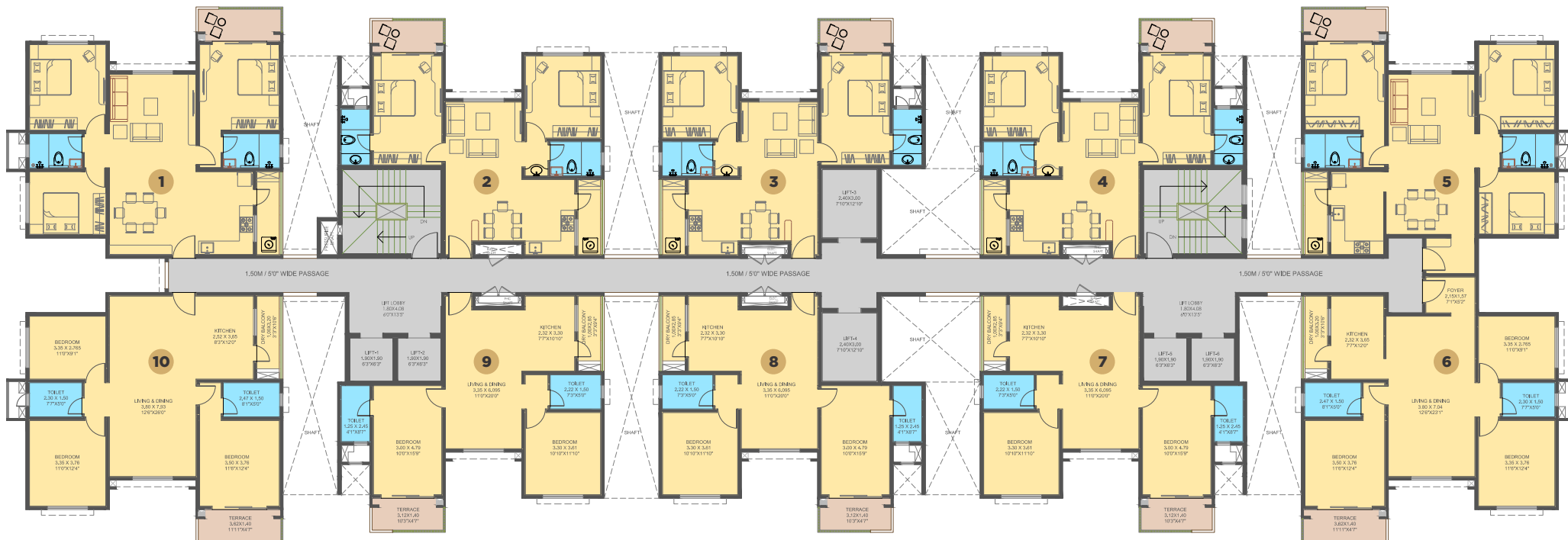
TOWER - 4 & 5

ODD FLOOR PLAN

Floor Nos. - 1, 3, 5, 7, 9, 11, 13, 15, 17, 19, 21

FLAT NO.	TYPE	BASIC CARPET		ENCL. BALCONY		OPEN BALCONY		TERRACE		TOTAL CARPET	
		SQ.M.	SQ.FT.	SQ.M.	SQ.FT.	SQ.M.	SQ.FT.	SQ.M.	SQ.FT.	SQ.M.	SQ.FT.
102, 103, 104, 107, 108, 109, 302, 303, 304, 307, 308, 309, 502, 503, 504, 507, 508, 509, 702, 703, 704, 707, 708, 709, 902, 903, 904, 907, 908, 909, 1102, 1103, 1104, 1107, 1108, 1109, 1302, 1303, 1304, 1307, 1308, 1309, 1502, 1503, 1504, 1507, 1508, 1509, 1702, 1703, 1704, 1707, 1708, 1709, 1902, 1903, 1904, 1907, 1908, 1909, 2102, 2103, 2104, 2107, 2108, 2109	2BHK	61.61	663.17	4.78	51.45	2.97	31.97	4.69	50.48	74.05	797.07
101, 301, 501, 701, 901, 1101, 1301, 1501, 1701, 1901, 2101 110, 310, 510, 710, 910, 1110, 1310, 1510, 1710, 1910, 2110	2.5BHK	78.57	845.73	11.16	120.13	3.31	35.63	4.56	49.08	97.6	1050.57
105, 305, 505, 705, 905, 1105, 1305, 1505, 1705, 1905, 2105 106, 306, 506, 706, 906, 1106, 1306, 1506, 1706, 1906, 2106	2.5BHK	78.73	847.45	11.02	118.62	3.31	35.63	4.56	49.08	97.62	1050.78

The dimensions mentioned in sq.m. are valid and dimensions mentioned in sq.ft. are for information only. Conversion table is; 1 sq.m. = 10.764 sq.ft. & 1 m. = 3.28 ft.



VTP BEAUMONDE



TOWER - 4 & 5

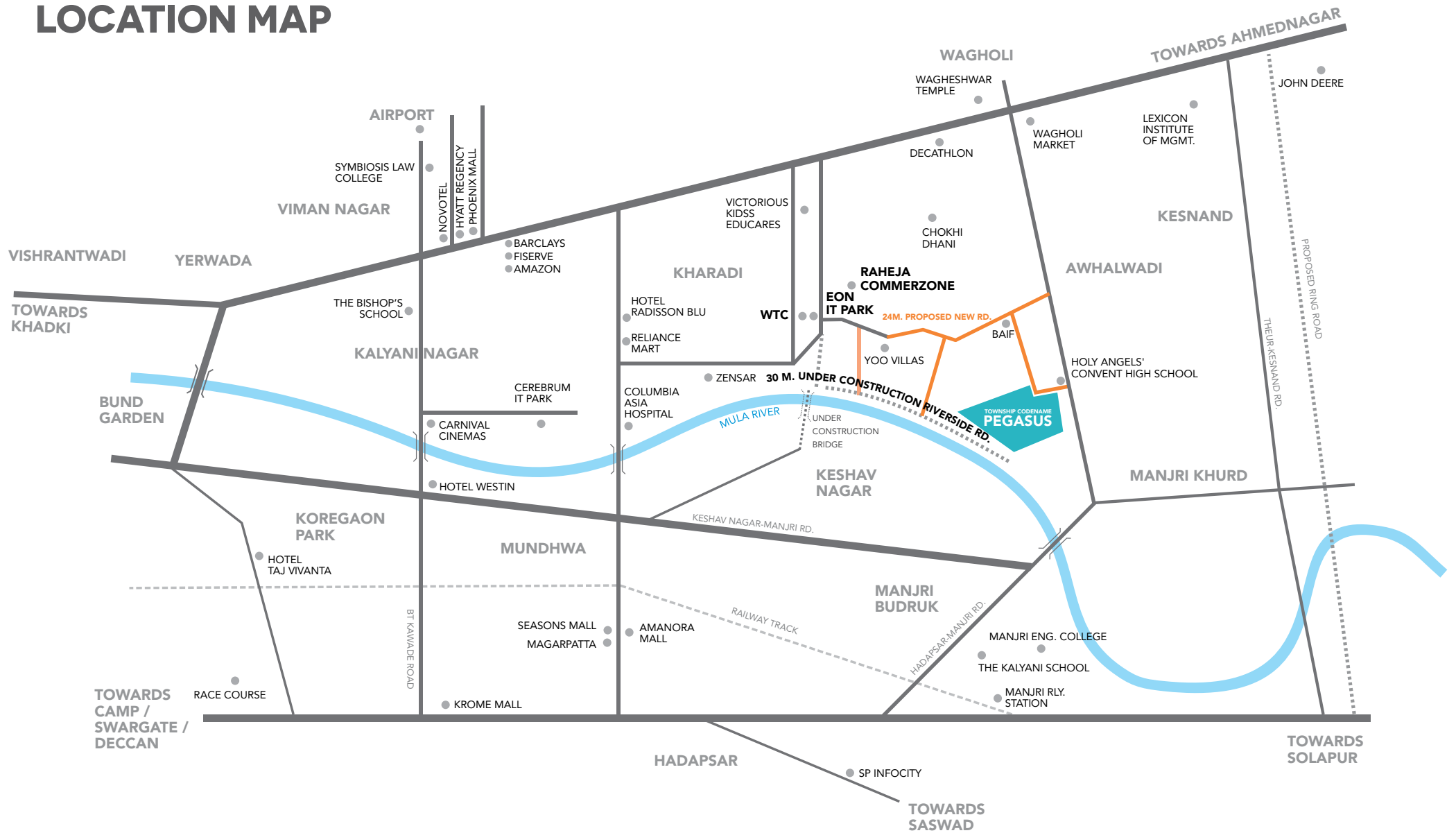
EVEN FLOOR PLAN

Floor Nos. - 2, 4, 6, 8, 10, 12, 14, 16, 18, 20, 22

FLAT NO.	TYPE	BASIC CARPET		ENCL. BALCONY		OPEN BALCONY		TERRACE		TOTAL CARPET	
		SQ.M.	SQ.FT.	SQ.M.	SQ.FT.	SQ.M.	SQ.FT.	SQ.M.	SQ.FT.	SQ.M.	SQ.FT.
202, 203, 204, 207, 208, 209, 402, 403, 404, 407, 408, 409, 602, 603, 604, 607, 608, 609, 802, 803, 804, 807, 808, 809, 1002, 1003, 1004, 1007, 1008, 1009, 1202, 1203, 1204, 1207, 1208, 1209, 1402, 1403, 1404, 1407, 1408, 1409, 1602, 1603, 1604, 1607, 1608, 1609, 1802, 1803, 1804, 1807, 1808, 1809, 2002, 2003, 2004, 2007, 2008, 2009, 2202, 2203, 2204, 2207, 2208, 2209	2BHK	61.51	662.09	4.78	51.45	2.97	31.97	4.37	47.04	73.63	792.55
201, 401, 601, 801, 1001, 1201, 1401, 1601, 1801, 2001, 2201 210, 410, 610, 810, 1010, 1210, 1410, 1610, 1810, 2010, 2210	2.5BHK	78.34	843.25	11.29	121.53	3.31	35.63	5.07	54.57	98.01	1054.98
205, 405, 605, 805, 1005, 1205, 1405, 1605, 1805, 2005, 2205 206, 406, 606, 806, 1006, 1206, 1406, 1606, 1806, 2006, 2206	2.5BHK	78.51	845.08	11.15	120.02	3.31	35.63	5.07	54.57	98.04	1055.30

The dimensions mentioned in sq.m. are valid and dimensions mentioned in sq. ft. are for information only. Conversion table is; 1 sq.m. = 10.764 sq.ft. & 1 m. = 3.28 ft.

LOCATION MAP





Google Map

www.vtprealty.in

MahaRERA Registration No. P52100007401, P52100009535, P52100007384, P52100009524, P52100007722, P52100007942, P52100009533 available at www.maharera.mahaonline.gov.in

Disclaimer: All representations are believed to be correct and envisaged by the developer/promoter. All art renderings, illustrations, photographs and pictures contained in this collateral are an artist's impression only and the same should not be construed to be the final images/views of the final project. The plans are only indicative and can be modified as liked by the developer before the launch. The printed material does not constitute a contract/offer of any type between the developer/promoter and the purchaser and shall supersede all statements, documents or representations made prior to signing of such sale and purchase agreement. Terms & conditions apply.

Pegasus is a name which is used for the time being as a codename and not the final name of the township.